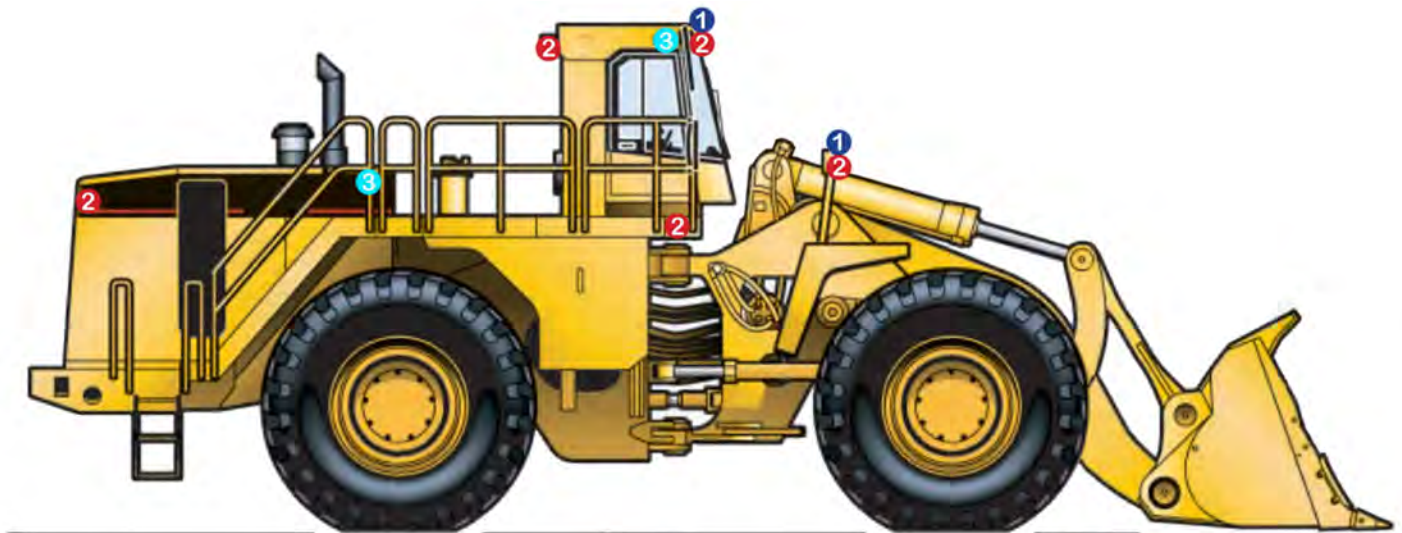


CAT 992G WHEEL LOADER



1 HYD-SP520
4" Square Spot LED
Work Light

2x Front Facing (One on each front fender mounted light box)
2x Top Forward/Side Facing (One on each front corner of cabin)



2 HYD-SP540
4" Square Flood LED
Work Light

2x Rear Facing (One on either side of rear of vehicle)
2x Top Rear Facing (One on each rear corner of cabin)
2x Top Forward/Side Facing (One on each front corner of access area)
2x Top Forward Facing (Two on each front corner of cabin)
2x Front Facing (One on each front fender mounted light box)

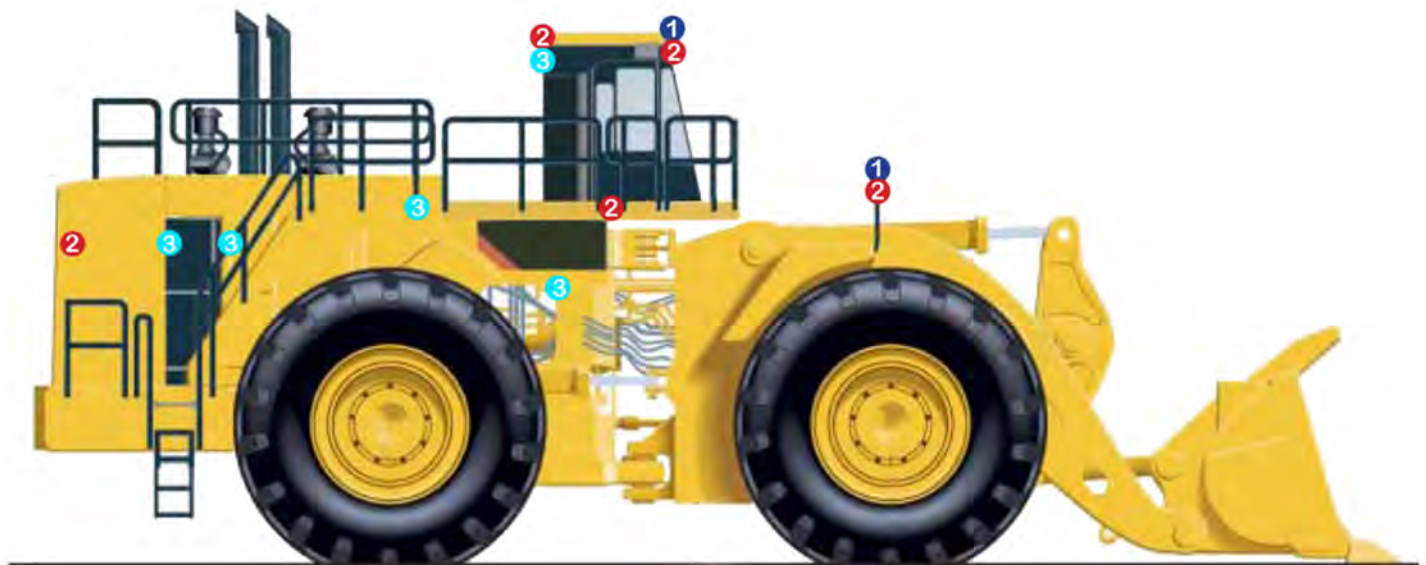


3 HYD-SP140
2" Round Flood LED
Pod

2x Rear facing (Either side of cabin facing stairways)
2x Top of stairways facing lower access areas)

Lift smarter, work safer

CAT 994F WHEEL LOADER



1 HYD-SP520
4\" data-bbox="169 670 324 717"/>

2x Front Facing (One on each front fender mounted light box)

2x Top Front Facing (One on each front corner of cabin)



2 HYD-SP540
4\" data-bbox="471 670 634 717"/>

4x Front Facing (Two per front fender mounted light box)

4x Top Forward Facing (Two on each front corner of cabin)

2x Forward/Side Facing (One on each front corner of access area)

2x Top Rear Facing (One on each rear corner of cabin)

2x Rear Facing (One either side of rear of vehicle)



3 HYD-SP140
2\" data-bbox="749 670 915 717"/>

2 x Rear Facing (Either side on top rear of cabin facing stairways)

2x Rear Facing (Either side of lower access area facing ladders)

2x Transmission Area (Internal lighting for transmission area)

4x Engine Bay (Internal lighting inside each engine bay access door)

Lift smarter, work safer