

# Locomotive LED

## Product Specifications

### Dual Function Head Light and Ditch Light

#### HYD-LOC001

## LOCOMOTIVE LED LIGHT

Exceeds FRA 200,000cd Requirement



### Product Features

- Exceeds FRA 200,000cd Requirement
- Dual Function Head Light and Ditch Light
- Drop in replacement PAR56
- Bright 7000K Color Temperature (2800K also available)
- 14-30v DC Variable Brightness Head Light
- 32-75v DC Max Brightness Ditch Light
- Polycarbonate Lens
- Aluminum Heatsink Housing
- 15.6Grms Vibration Rating
- Reverse Polarity Operation (circuitry auto adjusts for polarity)
- UV and Icephobic coatings
- IP68/69K Rated Dust and Waterproof
- Flash Mode compatible
- Only 35 Watt Consumption

### Technical Specifications

WARRANTY	Extended
NUMBER OF LEDES	4
BEAM PATTERN	10° Long Range Spot
WATTAGE	35 W
AMP DRAW(32V)	1.09A
INPUT VOLTAGE	14-75V DC
IP RATING	IP68/69K
OPERATING TEMP	-40 Celsius ~ +85 Celsius
LED LIFESPAN	50,000 Hours

### Extended Warranty

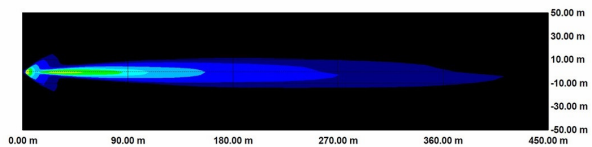
The Locomotive Light was designed and engineered to the highest product standards and comes backed with an extended warranty. Should the light ever fail within the period, simply return it for repair or replacement.

### Locomotive LED Light

Safety is second to none in the locomotive industry, and one of the easiest ways to dramatically improve the safety for both operators and personnel near tracks is an LED Lighting retrofit. The Locomotive Light from Hydra-Tech uses deep reflectors to produce a long-range beam pattern while exceeding the FRA 200,000cd requirements.



Locomotive LED Beam Pattern



### Product 2D View

6.96" x 3.85" x 6.96"  
176.8mm x 97.8mm

