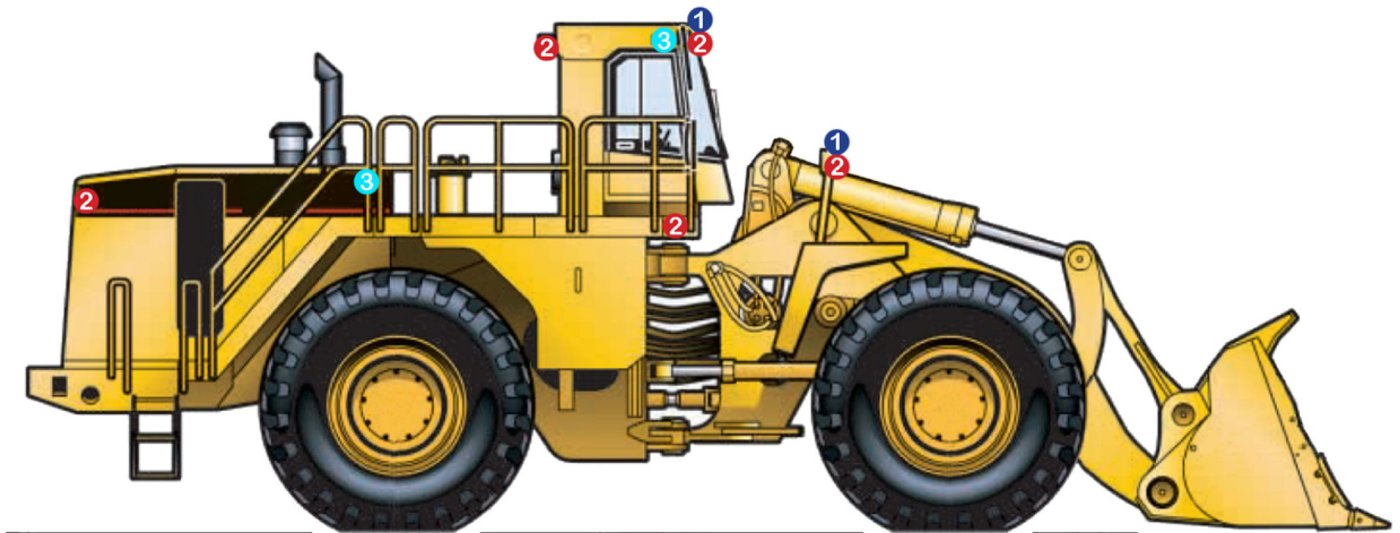




a division of GLBH Group Manufacturing Ltd.

## CAT 992G WHEEL LOADER



**1** HYD-SP520  
4" Square Spot LED  
Work Light

2x Front Facing (One on each front fender mounted light box)  
2x Top Forward/Side Facing (One on each front corner of cabin)



**2** HYD-SP540  
4" Square Flood LED  
Work Light

2x Rear Facing (One on either side of rear of vehicle)  
2x Top Rear Facing (One on each rear corner of cabin)  
2x Top Forward/Side Facing (One on each front corner of access area)  
2x Top Forward Facing (Two on each front corner of cabin)  
2x Front Facing (One on each front fender mounted light box)



**3** HYD-SP140  
2" Round Flood LED  
Pod

2x Rear facing (Either side of cabin facing stairways)  
2x Top of stairways facing lower access areas)

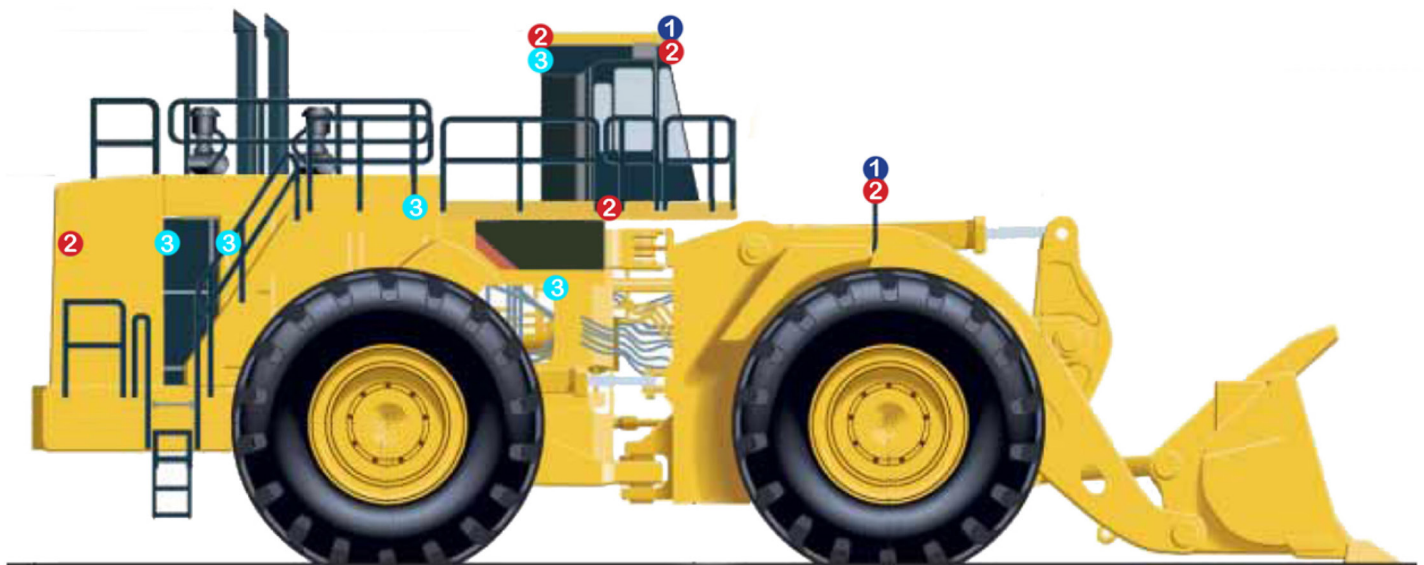
**MAKING WORK SAFE!**

6060 – 86<sup>th</sup> Avenue S.E. Calgary, Alberta, Canada T2C 4L7 T:(403) 720 7740 F:(403) 720 7758 W: [www.hydra-tech.net](http://www.hydra-tech.net)



a division of GLBH Group Manufacturing Ltd.

## CAT 994F WHEEL LOADER



**1** HYD-SP520  
4" Square Spot LED  
Work Light

2x Front Facing (One on each front fender  
mounted light box)  
2x Top Front Facing (One on each  
front corner of cabin)



**2** HYD-SP540  
4" Square Flood LED  
Work Light

4x Front Facing (Two per front fender mounted light box)  
4x Top Forward Facing (Two on each front corner of cabin)  
2x Forward/Side Facing (One on each front corner of  
access area)  
2x Top Rear Facing (One on each rear corner of cabin)  
2x Rear Facing (One either side of rear of vehicle)



**3** HYD-SP140  
2" Round Flood LED  
Pod

2 x Rear Facing (Either side on top rear of  
cabin facing stairways)  
2x Rear Facing (Either side of lower access  
area facing ladders)  
2x Transmission Area (Internal lighting for  
transmission area)  
4x Engine Bay (Internal lighting inside each  
engine bay access door)

**MAKING WORK SAFE!**

6060 – 86<sup>th</sup> Avenue S.E. Calgary, Alberta, Canada T2C 4L7 T:(403) 720 7740 F:(403) 720 7758 W: [www.hydra-tech.net](http://www.hydra-tech.net)