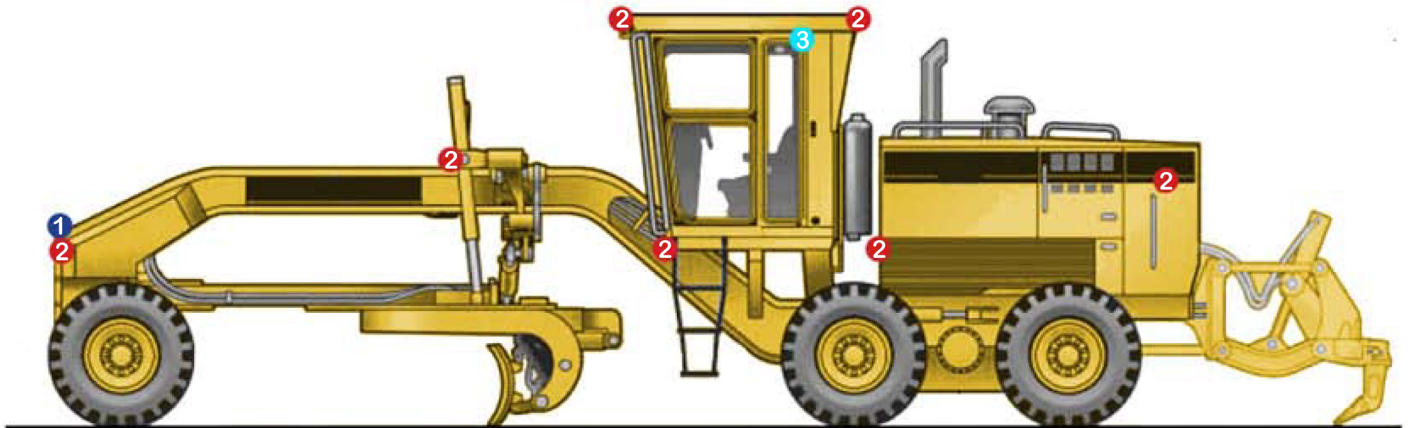
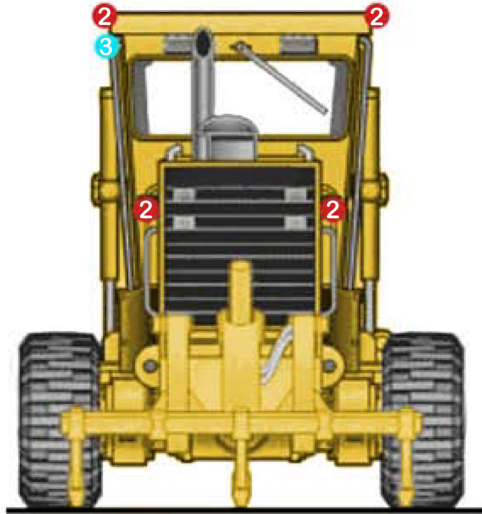




HYDRA-TECH INTERNATIONAL

a division of GLBH Group Manufacturing Ltd.

CAT 16G GRADER



1 HYD-SP520
4" Square Spot LED
Work Light

2x Front Facing (One on each side of chassis rail)



2 HYD-SP540
4" Square Flood LED
Work Light

2x Front Facing (One on each side of chassis rail)
2x Lower Forward/Side Facing (Either side in front of blade)
2x Lower Forward/Side Facing (Either side directed at blade)
2x Rear Facing (Either side facing ripper)
2x Top Forward Facing (Either side on front corner of cabin)
2x Lower Rear/Side Facing (Either side on lower engine compartment)



3 HYD-SP140
2" Round Flood LED
Pod

1x Left Hand Side Access Area (Top rear of cabin facing ladder)

MAKING WORK SAFE!

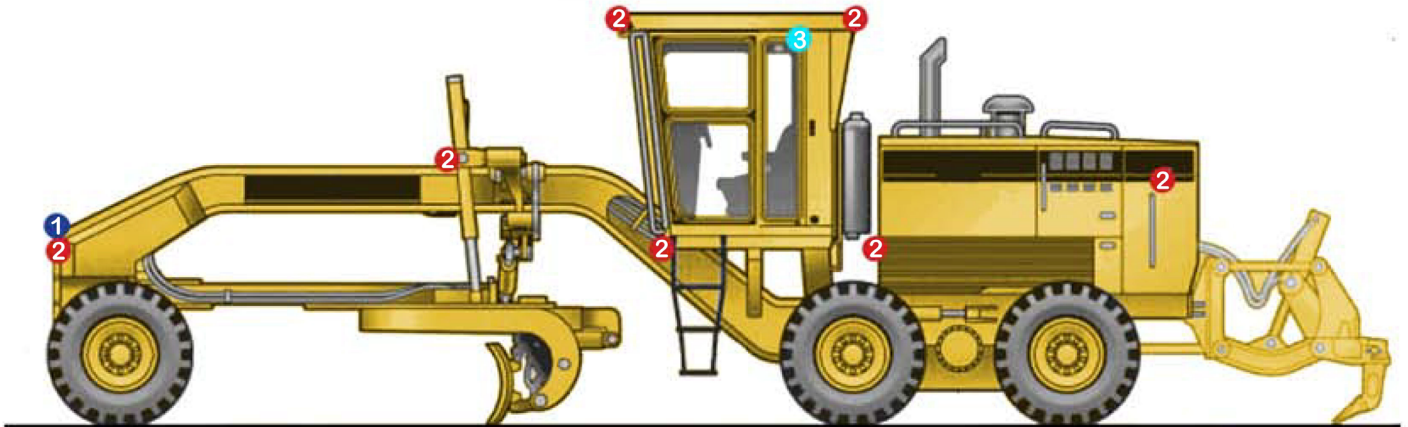
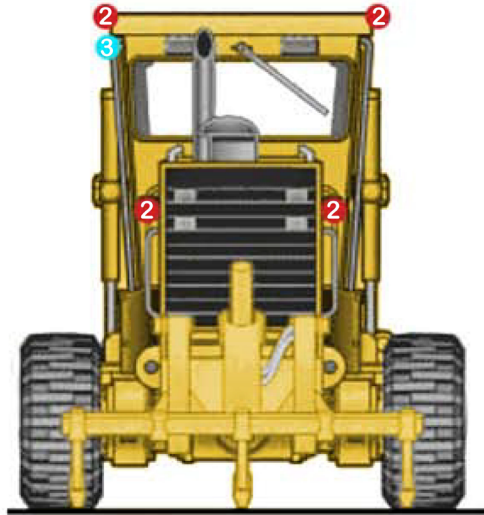
6060 – 86th Avenue S.E. Calgary, Alberta, Canada T2C 4L7 T:(403) 720 7740 F:(403) 720 7758 W: www.hydra-tech.net



HYDRA-TECH INTERNATIONAL

a division of GLBH Group Manufacturing Ltd.

CAT 16H GRADER



1 HYD-SP520
4" Square Spot LED
Work Light

2x Front Facing (One on each side of chassis rail)



2 HYD-SP540
4" Square Flood LED
Work Light

2x Lower Forward/Side Facing (Either side in front of blade)
2x Top Forward Facing (Either side on front corner of cabin)
2x Lower Forward/Side Facing (Either side directed at blade)
2x Top Forward/ Side Facing (Either side on top rear of cabin)
2x Rear Facing (Either side facing ripper)
2x Front Facing (One on each side of chassis rail)
2x Lower Rear/Side Facing (Either side on engine compartment)



3 HYD-SP140
2" Round Flood LED
Pod

1x Left Hand Side Access Area (Top rear of cabin facing ladder)

MAKING WORK SAFE!

6060 – 86th Avenue S.E. Calgary, Alberta, Canada T2C 4L7 T:(403) 720 7740 F:(403) 720 7758 W: www.hydra-tech.net



HYDRA-TECH INTERNATIONAL

a division of GLBH Group Manufacturing Ltd.

CAT 16M GRADER



1 HYD-SP520
4" Square Spot LED
Work Light

2x Front Facing (One on each side of chassis rail)



2 HYD-SP540
4" Square Flood LED
Work Light

2x Lower Forward/Side Facing (Either side in front of blade)
2x Top Forward Facing (Either side on front corner of cabin)
2x Lower Forward/Side Facing (Either side directed at blade)
2x Top Forward/ Side Facing (Either side on top rear of cabin)
2x Rear Facing (Either side facing ripper)
2x Front Facing (One on each side of chassis rail)
2x Lower Rear/Side Facing (Either side on engine compartment)



3 HYD-SP140
2" Round Flood LED
Pod

1x Left Hand Side Access Area (Top rear of cabin facing ladder)

MAKING WORK SAFE!

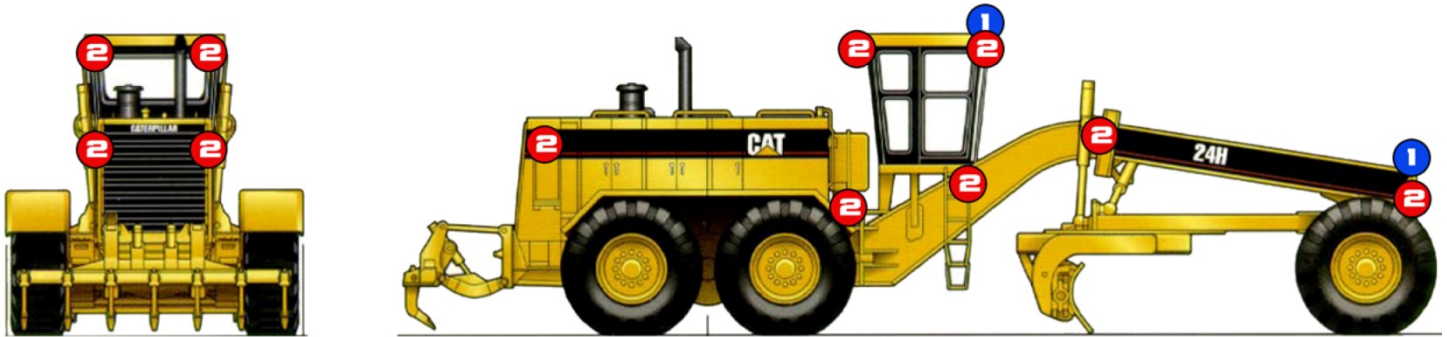
6060 – 86th Avenue S.E. Calgary, Alberta, Canada T2C 4L7 T:(403) 720 7740 F:(403) 720 7758 W: www.hydra-tech.net



HYDRA-TECH INTERNATIONAL

a division of GLBH Group Manufacturing Ltd.

CAT 24H GRADER



1

HYD-RXP12e3065T
4" Square Driving
LED Work Light



2x Front Facing (One on each side of chassis rail)
2x Front Facing (Inside Pair Overhead Cabin)

2

HYD-RXP1260T
4" Square Flood
LED Work Light



2x Lower Forward/Side Facing (Either side in front of blade)
2x Top Forward Facing (Outside Pair Overhead Cabin)
2x Lower Forward/Side Facing (Either side directed at blade)
2x Top Forward/ Side Facing (Either side on top rear of cabin)
2x Rear Facing (Either side facing ripper)
2x Front Facing (One on each side of chassis rail)
2x Lower Rear/Side Facing (Either side on engine compartment)

MAKING WORK SAFE!

6060 – 86th Avenue S.E. Calgary, Alberta, Canada T2C 4L7 T:(403) 720 7740 F:(403) 720 7758 W: www.hydra-tech.net